

Jetwing ECO HOLIDAYS

SRI LANKA

SRI LANKA'S PREMIER WILDLIFE & WELLNESS OPERATOR!





Published by
Jetwing Eco Holidays,
46/26 Navam Mawatha, Colombo 02, Sri Lanka
Copyright © Jetwing Eco Holidays, Sri Lanka
2019

Photography Credits
Cover © Raveendra Siriwardene; P 14 Milinda Wattegedara
Avium - *An endless journey through Sri Lankan wilds* | avium03@gmail.com
Inner cover, P. 6,9,10,16,17, 19, 20 © Gehan De Silva Wijeyeratne

www.jetwingeco.com

PURPLE FACED LEAF MONKEY

CONTENT



PAGE 01-04
JETWING ECO HOLIDAYS
02 | WHY TRAVEL WITH US
03 | SRI LANKA



PAGE 05-28
WILDLIFE
09 | SRI LANKA'S BIG 5
11 | BIRDING
13 | BEST FOR BLUE
15 | LEOPARD'S ISLAND
17 | THE GATHERING
19 | PRIMATES
21 | BUTTERFLY & DRAGONFLY SAFARIS
23 | SRI LANKA'S WILDLIFE CALENDAR
27 | BEST FOR WILDLIFE



PAGE 29-34
WELLNESS & SPIRITUAL
33 | BEST FOR WELLNESS

PAGE 35-38
MEDIA TOURS
37 | EXPERTISE OF JETWING ECO HOLIDAYS IN HANDLING MEDIA & FILM CREWS



PAGE 39-47
39 | OTHER TOURS
41 | EXPERIENCES
45 | OUR TEAM
47 | JETWING FLEET



PAGE 48-52
48 | PUBLICATIONS
49 | SUSTAINABILITY POLICY
51 | #JETWINGECOHOLIDAYS



Jetwing Eco Holidays has become the benchmark for wildlife and wellness travel in Sri Lanka. Founded in 2001, Jetwing Eco Holidays offers a rare and extraordinary way of exploring the rich landscape of the Sri Lankan wilderness through uniquely designed holiday experiences. The clientele for Jetwing Eco Holidays consists of specialist eco & wellness travelers and media & film crews, birders, wildlife enthusiasts and wildlife photographers, predominantly from the UK and Europe.

The tours are tailor-made as per client specifications and are run with specially trained naturalist chauffeur guides. Jetwing Eco Holidays has realized that one of their key strengths and advantages over its direct competitors and other larger travel agencies is having a well-qualified and trained team of dedicated and passionate travel designers, tour guides and naturalists.

Crafted with special attention to indigenous flora and fauna, holiday experiences offered by Jetwing Eco Holidays are aimed at conserving and sustaining the fragile ecosystems that are home to the island’s exotic wildlife. The wellness experiences are expertly crafted using some of Sri Lanka’s most beautiful hotels in fantastic locations. Whether it is Ayurveda (both preventive and curative), spa, wellness, yoga or meditation, perfect programs are offered taking into consideration all your needs and using the knowledge and experience of travel specialists that has been accumulated over many years. Jetwing Eco Holidays is also the expert ground resource for many internationally reputed film crews and brands such as Nat Geo Wild and BBC Wildlife, having worked with them for many years and on many productions as Sri Lanka’s premier wildlife and wellness operator.

WHY TRAVEL WITH US



One of Sri Lanka’s oldest and premier brands dedicated to wildlife since 2001



A pioneer in taking Sri Lanka’s wildlife tourism to the world! Instrumental in helping to position fantastic wildlife products such as: **THE ELEPHANT GATHERING, BEST FOR BLUE (WHALE WATCHING), THE BIG FIVE, SINHARAJA BIRD WAVE & LEOPARD SAFARIS**



Part of the **JETWING FAMILY** of companies with over **40 YEARS** expertise, with access to wider resources including wholesale rates and our own **JETWING HOTELS** and **TRANSPORT FLEET**



INTERNATIONAL MEDIA CREWS from BBC, NatGeo etc. have all worked with Jetwing Eco Holidays for all ground logistics!



SMALL & FOCUSED, SPECIALIZED, EXPERT TEAM giving attention to detail that small specialist agencies require **EXPERIENCED & PASSIONATE** group of field guides and naturalists with years of field expertise



Comprehensive **TRAVEL INSURANCE**



EXPERIENCED DIRECTORS with years of excellence in Sri Lanka tourism



Socially responsible: Many projects dedicated toward the **CONSERVATION OF WILDLIFE AND NATURE**



The widest suite of **WILDLIFE PUBLICATIONS** including publications authored by Gehan De Silva Wijeratne



SRI LANKA

Defined by Diversity, Compactness and Authenticity, Sri Lanka is a destination that has got all the necessary holiday ingredients. Hence, the reason it is often accompanied by the descriptive title of “Magical Magnificence”.

Holidays in Sri Lanka are a combination of magic that enthralls you and magnificence that enchants you because of the striking impression it leaves on you. Once you step onto Sri Lankan soil, you are part of an unforgettable experience that will leave you longing for more!

This pearl of the Indian Ocean, as it has been described for time immemorial, is a travelers’ paradise, defined by its golden beaches, crystal blue waters, cultural and historical grandeur, natural beauty, scenic and panoramic hill country, flavorful culinary experiences and its untamed wildlife. Its cultural diversity offers many benefits to travelers such as diverse food experiences, year-round festivals and diverse customs.

Sri Lanka has many accommodation options for the discerning travelers. From opulent boutique hotels to private villas, from budget resorts to guest houses, there is something for everyone. Top-notch cuisine, stunning scenery, colorful culture and amazing people all come together to make it the holiday of a lifetime.

Come experience the magnificence of Sri Lanka and rest assured that it will be a holiday of a lifetime. At Jetwing, we strive to make our guests happy with their vacation and the rest we leave to ‘serendipity’ because after all, Sri Lanka is full of surprises!

WILDLIFE

Sri Lanka is a melting pot of biodiversity, which undeniably makes it one of the top destinations for wildlife tourism in the world. Encompassing diverse species of Flora and Fauna, Sri Lanka is a wildlife enthusiast's bucket list destination.

While it offers the rare and extra-ordinary opportunity of witnessing the largest animal in the world (Blue Whale) and the largest terrestrial mammal (Asian Elephant), it also offers the opportunity of witnessing unique phenomena such as "The Big Five", "The Sinharaja Bird Wave", "The Gathering", "The Crossing", Primate Safaris, Big Game Safaris, Butterfly & Dragon Safaris and Birding Tours with 34 species of birds that are found only in Sri Lanka, termed as "Endemic Species".

In terms of species per square kilometer, Sri Lanka ranks amongst the top fifteen in the world for many groups including Flowering Plants, Birds, Mammals, Amphibians and Snakes. There are few islands in the world that have high density of species diversity, endemism and the presence of large Mammals such as Elephants, Leopards and Sloth Bears all at once, and Sri Lanka is one of them.



GOLDEN JACKAL

10 REASONS WHY SRI LANKA IS A SURPRISINGLY PERFECT DESTINATION FOR WILDLIFE

01

Compact Island – Sight the largest animal in the world (Blue Whale) and the largest terrestrial Mammal (Asian Elephant) in few days.

02

See the **Big Five** – Leopard, Asian Elephant, Blue Whale, Sperm Whale and Sloth Bear.

03

22 National Parks.

04

Yala National Park has the **highest Leopard density** in the world.

05

The **Whale Triangle** to see Blue Whales and Sperm Whales throughout the year.

06

34 Endemic species of Birds.

07

Behold “**The Majestic Crossing**”, a seasonal phenomena where herds of Elephants swim across a river.

08

Diversity – a range of wildlife experiences within few days.

09

Over **20%** of the island’s area is covered by nature parks and reserves with **rich biodiversity hotspots**.

10

View “**The Gathering**” where over 300 Elephants gather in search of water during the dry season.

SRI LANKA'S BIG 5

Due to the compactness and diversity, Sri Lanka offers the unique and extraordinary chance of beholding the largest animal in the world (Blue Whale) and the largest terrestrial Mammal (Asian Elephant) along with many other wildlife giants such as the Leopard, Sperm Whale and Sloth Bear within just few days during your holiday in Sri Lanka. This extraordinary phenomenon is called “The Big Five” of Sri Lanka, which is definitely an unforgettable and once in a lifetime experience. Mirissa, Kalpitiya and Trincomalee are hotspots for Blue Whales and Sperm Whales, also called the “Whale Triangle”. Yala National Park, Wilpattu National Park and Kumana National Park are the best hotspots to sight Leopards and Yala National Park is believed to have the highest Leopard density in the world. Udawalawe National Park, Yala National Park, Minneriya National Park, Wasgamuwa National Park and Gal Oya National Park are best hotspots to witness Asian Elephants, whereas Yala National Park is a hotspot to witness Sloth Bears.



ASIAN ELEPHANT

The Asian Elephant (*Elephas maximus*) *maximus* is identified as the only living species belonging to the genus of *Elephas*. A high density of Asian Elephants can be witnessed within Sri Lanka. Udawalawe National Park and Yala National Park are best hotspots whereas Wasgamuwa National Park and Gal Oya National Park are emerging hotspots to witness them. Minneriya National park holds a specialty of witnessing them due to the unique phenomenon of “The Gathering” where herds of Elephants gather during which you can spot over 300 Elephants at once. From the year 1986, the Asian Elephant has been listed as “Endangered” in the IUCN Red List. However, during your holiday in Sri Lanka you can witness many of them.



LEOPARD

The Sri Lankan Leopard (*Panthera pardus kotiya*) is the only species of big cat found in Sri Lanka. Leopards are highly adaptable, feeding on a wide range of prey, ranging between Insects, Fish, small Mammals, Deer and Buffalo calves. It is one of the eight recognized subspecies of Leopard in the world which is endemic to Sri Lanka. Leopards are found across the mountainous ranges, rainforests and the dry-zone jungles of Sri Lanka. Yala National Park, Wilpattu National Park and Kumana National Park are the best hotspots to witness them.



SLOTH BEAR

The Sri Lankan Sloth Bear (*Melursus ursinus inornatus*) is a subspecies of Sloth Bears and it is one of the biggest Bears in tropical latitudes. They are omnivores and feed mainly on fruits, nuts and meat. One interesting phenomenon that takes place in Sri Lanka is the “Palu Fruit Season” where groups of Sloth Bears feed on Palu Trees (a fruit tree). The Sri Lankan Sloth Bear has been listed as “Highly Threatened” in the IUCN Red List.



BLUE WHALE

The Blue Whale (*Balaenoptera musculus*) is a Marine Mammal that has been classified as “Endangered” in the IUCN Red List, belonging to the Baleen Whales type. It is identified as the largest animal in the world. Mirissa, Kalpitiya and Trincomalee are three hotspots for Blue Whale sightings in Sri Lanka, termed as “The Whale Triangle”.



SPERM WHALE

The Sperm Whale (*Physeter macrocephalus*) is the largest toothed Whale in the world and the largest toothed predator in the world. Within the genus of *Physeter*, the Sperm Whale is the only living species. Mirissa, Kalpitiya and Trincomalee are three hotspots for Sperm Whale sightings in Sri Lanka, termed as “The Whale Triangle”. Females and young Sperm Whales live in nursery groups. It is believed that the largest super pods of Sperm Whales are found in Sri Lanka.

BIRDING

THE SINHARAJA BIRDWAVE

For an island of its size, Sri Lanka is blessed with a wide array of avian species. Nearly 470 different species of Birds have been recorded including migrants. 34 species are endemic, found nowhere else in the world and can be observed all year-round. Between November and March, around 150 migrant species arrive and reside in Sri Lanka to escape the bitterly cold winters across the Northern Hemisphere. Popularly dubbed as The Sinharaja Birdwave, the largest mixed species feeding flocks can be found at the Sinharaja Rainforest with an average of 42 individual Birds. This is also a part of the world's longest running study on bird-flocks with research having commenced in 1981. The Birds here are also relatively habituated and are easy to watch. Kumana National Park is another hotspot in Sri Lanka for bird watching. Bird watching tours are run with specially trained birding guides to meet the demands of our clients.



SERENDIB SCOPS OWL



RED FACED MALKOHA



SRI LANKA BLUE MAGPIE

BEST FOR BLUE

27 species of Whales and Dolphins have been recorded off Sri Lanka. Mirissa is regarded as the best place in the world for watching the Blue Whale, the largest animal in the world.

For seeing both Blue Whale and Sperm Whale together, it is almost certainly the best place in the world. Blue Whales are believed to be resident in Sri Lankan waters throughout the year. There is also a migratory population in the Indian Ocean that travel from the Arabian Sea via Sri Lanka to the Bay of Bengal between November through to April. Spinner Dolphins are another highlight and are encountered on most Whale Watching excursions when heading to deeper waters; it is not uncommon to see large pods of even a thousand individuals.

SRI LANKA'S WHALE WATCHING TRIANGLE

MIRISSA (SOUTH)

November - April

Blue Whales and occasionally pods of Sperm Whales

KALPITIYA (NORTH-WEST)

February - April

Prime location for Sperm Whales

TRINCOMALEE (EAST)

February - August

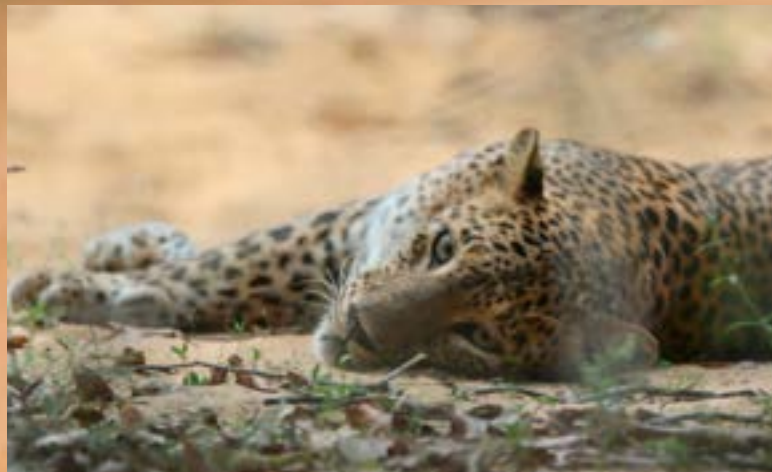
Blue Whales and occasionally pods of Sperm Whales



BLUE WHALE
Photography © Andrew Sutton

LEOPARD'S ISLAND

Sri Lanka is one of the world's top destinations to watch and photograph Leopards in the wild. The Sri Lankan Leopard is an endemic subspecies and is the country's apex predator. The absence of other large Carnivores such as Lions, Hyenas and Tigers which kill competing predators has made Sri Lanka's Leopards much bolder and active during the daytime. Block I of Yala National Park has the highest concentration of Leopards in the world with an average density of one Leopard per every 2-3 square kilometers. The Wilpattu National Park in North-West and Kumana National Park are other hotspots for watching Leopards.



LEOPARDS
HAMU & DIGANWALA FEMALE

THE GATHERING

The Gathering is renowned among the world's top wildlife spectacles, where over 300 awe-inspiring Asian Elephants congregate on the grassland that sprouts on the receding tank beds of Minneriya National Park. It is a wonderful opportunity for wildlife enthusiasts and casual travelers alike to observe the mischievous interaction between the lone males and the females in the herd and seeing the Elephants immerse themselves in water indulging in play. The Gathering is a seasonal event which takes place from June through to September; Elephant numbers peak from around August as the prevailing drought conditions intensify. In Udawalawe National Park, Elephant sightings are virtually guaranteed, a promise that no other wildlife park in Asia can make. Yala National Park is also home to a sizeable population of Elephants, with 10 - 12 Tuskers roaming within the peripheries of the park. Wasgamuwa National Park in North-Central is another good location for Elephant sighting. Gal Oya National Park is another hotspot to sight Elephants which also encompasses the rare phenomenon of "The Crossing" where herds of Elephants swim across Gal Oya Reservoir



PRIMATES

Sri Lanka has five species of Primates; three species of Monkeys - Grey Langur, Toque Macaque and the endemic Purple-Faced Leaf Monkey and two species of Loris - Grey Loris and Red Loris. It is probably one of the best places in the world to observe the social dynamics of diurnal Primates. The Toque Monkeys are currently a part of one of the world's longest running field studies on primates. Sites such as Polonnaruwa and Sigiriya in Sri Lanka's Cultural Triangle are among the country's hotspots for Primate sighting. All three species of Monkeys can be observed readily during the day, and after dark you can go out and look for the elusive Grey Slender Loris.



GREY LANGUR



GREY SLENDER LORIS
© CHAMINDA JAYASEKARA

BUTTERFLY & DRAGONFLY SAFARIS

245 species of Butterflies have been recorded in Sri Lanka which includes 23 endemics. Even the wetland reserves near the capital of Colombo will hold as many as 50 different species. Seasonally, large migrations of Whites and Yellows take place. At least 127 species of Dragonflies have been described, just waiting to be discovered. The whole island is like a giant wetland complex with thousands of man-made lakes and vast areas of paddy-fields and irrigation networks, making it the ideal place to sight Dragonflies. Jetwing Eco Holidays arrange specialized Butterfly and Dragonfly Safaris in Sri Lanka.



CRIMSON DROWING

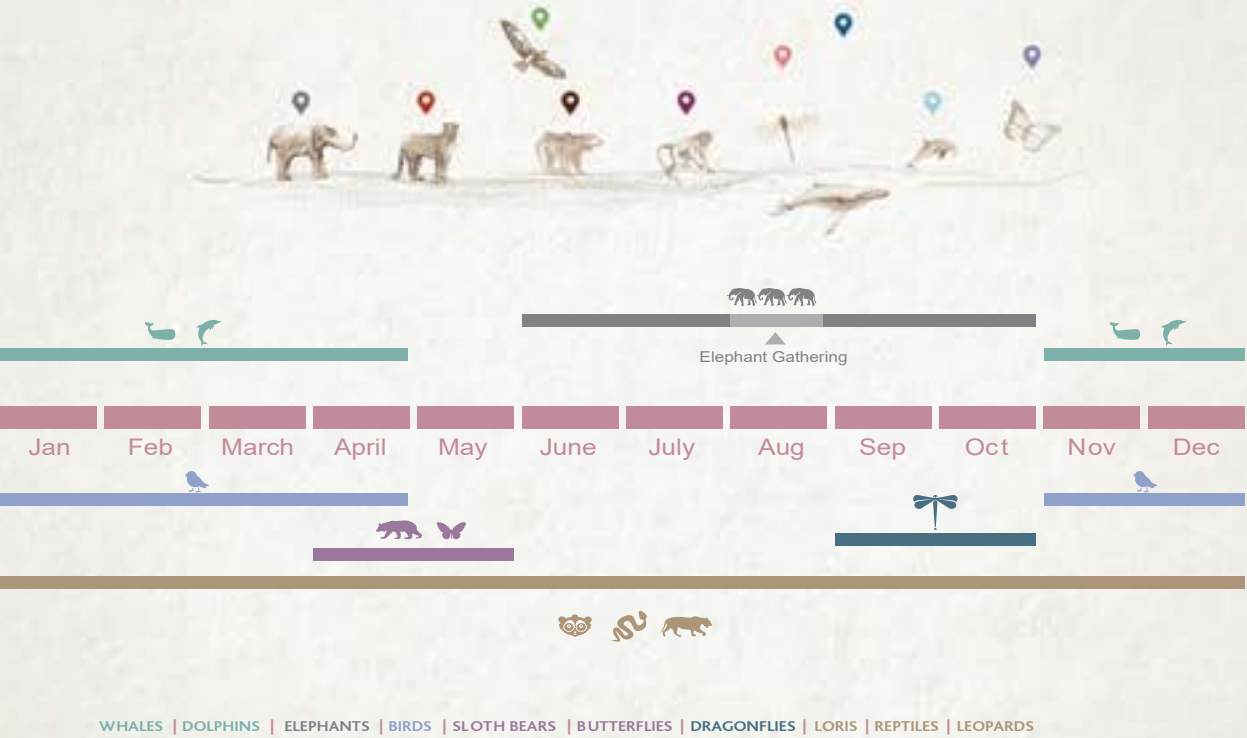


COMMON SILVERLINE

SRI LANKA'S WILDLIFE CALENDAR

Sri Lanka is a small island home to a rich and spectacular array of Flora and Fauna.

Amidst the lush jungles of the island roam herds of majestic Elephants, elusive Leopards and swift footed Deer. The mountains and waterways are abundant with a breath-taking array of Dragonflies, the fluttering wings of Butterflies and hosts of beautiful Birds, and rare Amphibians. The surrounding ocean also brings the island close to Blue Whales and Sperm Whales, schools of vivacious Dolphins and reefs teeming with colorful Fish. Below illustration depicts the best times to spot the diverse array of wildlife in Sri Lanka.



- | | | |
|---------------------------------|------------------------------------|--------------------------------|
| 1 Chundikkulam Sanctuary | 8 Peradeniya Botanical Garden | 14 Udawalawe National Park |
| 2 Madhu Road Sanctuary | 9 Talangama Tank & Marshes | 15 Yala National Park |
| 3 Kokkilai Bird Sanctuary | 10 Kelani Valley Forest Reserve | 16 Lunugamvehera National Park |
| 4 Wilpattu National Park | 11 Victoriya Randenigala Sanctuary | 17 Kumana National Park |
| 5 Hakkala Botanical Garden | 12 Gal Oya National Park | 18 Sinharaja Rainforest |
| 6 Minneriya Girithale Sanctuary | 13 Horton Plains National Park | 19 Bundala National Park |
| 7 Wasgamuwa National Park | | |

BIRDING

MARCH - APRIL

In Central Sri Lanka the rainforests are rich in biodiversity. The mixed species flocks of Birds in **Sinharaja** have been the subject of one of the longest running field studies on mixed species flocks in the world, showing them to be some of the largest. It is not unusual to encounter flocks with over twenty species of Birds. On many occasions, over half a dozen Endemic Birds can be seen in a single flock.

NOVEMBER - FEBRUARY

The winter migrants have arrived in force. Every bush in Yala seems to have a brown shrike perched atop it, and every shaded copse has an Indian Pitta screeching from around six o'clock. Migrant Waders stopover in the freshly ploughed paddy fields of **Talangama**, en route Down South to the rich Wader habitats of reserves such as **Kalameitiya**, **Bundala** and **Palatupana**. The coastal flats teem with tens of thousands of Curlew Sandpipers, Lesser Sand Plovers, Little Stints, Black-winged Stilts, Common and Wood Sandpipers.

LEOPARD

JUNE - SEPTEMBER

Leopards are seen throughout the year at **Yala National Park**, but the die-back of the ground cover with the onset of the dry season from June through to September provides better viewing opportunities for finding and photographing them. **Wilpattu National Park** is another top location for Leopard watching especially during this dry season.

BLUE WHALE

DECEMBER - APRIL

Mirissa in the South and **Trincomalee** in the East of Sri Lanka are the world's top two locations for sighting Blue Whales. The number of Blue Whales peak at this time during their annual migration as they travel between feeding areas in the Bay of Bengal and Somalia in Africa. The resident population of Blue Whales extends the viewing season up to about August.

NOVEMBER - APRIL

Until the South-West monsoon arrives, Blue Whales can be observed off **Mirissa** with an encounter rate of over 80%. The North-East monsoon begins to ease from around February and Blue Whales may be seen off **Trincomalee** until late August.



SPERM WHALE

DECEMBER & APRIL

Like its gargantuan cousin, the Blue Whale, sightings of Sperm Whales peak in both these months during their migration from the Arabian Sea to the Bay of Bengal. The deep seas off the **Kalpitiya** Peninsula in the North-West where the continental shelf runs parallel to the land provide an ideal habitat for these giant oceanic predators, which need to dive several hundreds of metres to hunt their prey, such as the Giant Squid.

DECEMBER - APRIL

Sperm Whales may also be seen off **Mirissa** in the South.

FEBRUARY - APRIL

Catch one last glimpse of them off **Trincomalee** in the East.

ASIAN ELEPHANT

THROUGHOUT THE YEAR

Asian Elephants are seen in almost all dry zone National Parks including **Udawalawe**, **Yala** and **Wasgamuwa**.

JUNE - SEPTEMBER

"The Gathering" can count up to an awe-inspiring 300 Elephants converging towards the receding shores of the **Minneriya Reservoir**.



BUTTERFLIES & DRAGONFLIES



FEBRUARY

The **North-East** monsoon begins to subside and the mud puddles on the jeep tracks in the **North-Central** province are already swarming with newly emerging Butterflies that can feed on the luxuriant foliage that grows after the monsoon rains when clouds of 'Whites' and 'Yellows' gather.

THROUGHOUT THE YEAR

Dragonflies can be seen close to water sources that are abundant in the numerous tanks and lakes scattered throughout the country.

SLOTH BEAR

MAY - JULY

The Sloth Bear is generally a Nocturnal Mammal, though occasional daytime sightings are possible at **Yala National Park** where sightings peak when the Palu Trees (a fruit-bearing tree) begin to bear fruit. With Berries aplenty, they go on a feeding spree with some reportedly showing signs of inebriation from gorging themselves on the Palu fruit.

MAY - JULY

At **Wilpattu National Park** sightings peak during the dry season, occurring almost on a daily basis in the late afternoons.



PRIMATES

THROUGHOUT THE YEAR

The archaeological sites of **Polonnaruwa** and **Sigiriya** are excellent for observing all three species of Monkeys; Hanuman Langur, Toque Macaque and Purple-Faced Leaf Monkey. All can be encountered during the course of a single morning or afternoon. Grey Slender Loris, a small Nocturnal Primate can be encountered around **Sigiriya** after dark on specially guided tours.





JETWING VIL UYANA



JETWING SAFARI CAMP



GAL OYA LODGE



WILD COAST TENTED LODGE

BEST FOR WILDLIFE

Being a pioneer of wildlife tours in Sri Lanka, we pick the best accommodation options that suit the wildlife preferences and experiences that our clients demand. With a long established network of high quality and experienced service providers for accommodation, we select the right mix for each client.



JETWING YALA

WELLNESS & SPIRITUAL

As the famous saying goes, “The key to wellness is the personal responsibility of maintaining good health and well-being”. The concept of “Wellness Tourism” has been developed with the purpose of influencing people to travel in order to get involved in physical, spiritual and psychological activities that enhance the mental and physical states of people, leading to improved states of health and well-being, while generating serenity and tranquillity of the mind, body and soul. Many branches have been developed under the phenomenon of “Wellness Tourism”, out of which Ayurveda Tourism and Spiritual Tourism have gained special attention and interest of tourists, mainly due to the many exceptional benefits provided and offered through these. The uniqueness of Wellness Tourism in Sri Lanka is how it is offered with the essence of historical Ayurvedic practices that were followed during the ancient times. Termed “Ayurveda Tourism”, it helps people to acquire harmony of body, mind and soul. Jetwing Eco Holidays ensures to enthrall you with the best of Wellness Tourism.





AYURVEDA

Ayurveda in its essence is the science of life and longevity of people which goes back to thousands of years in history. It is recognized as one of the oldest medicinal practices and it is believed that advanced Ayurvedic practices were followed in many areas of Sri Lanka including Sigiriya, Polonnaruwa and Jaffna. It is a practice where profound thoughts of medicine and well-being are blended together with philosophy and meditation. It cascades you toward achieving the right balance through providing a wholesome physical, mental and spiritual growth.



SPA

Spa treatments offered with careful attention to detail by Jetwing Eco Holidays, are combinations of relaxation, beauty tactics and reflexology techniques, that offer internal as well as external charm and beauty. Indulge in an array of spa treatments varying from foot reflexologies to fully-immersed body therapy to rejuvenate your soul.



YOGA

Yoga is a practice of Spiritual Tourism which falls within Wellness Tourism. It is believed, that Yoga allows to acquire true wellness of the mind, body and soul through the concentration on spiritual power sources and power positions of the universe. As the world famous saying goes, "Find your inner peace and everything else will fall into place". Jetwing Eco Holidays offers authentic Yoga practices that would capture your soul.



MEDITATION

Meditation is one of the highly-sought after Spiritual Tourism practices in the world which drifts you away from the daily hustle-bustle into a state of pure inner peace. It offers healing to one's mind, body and soul, thus accelerating to a whole new level of living. It is believed to be a method which connects the individual self with the divine universal spirit and the sub-conscious mind, to attain inner peace.



SANTANI, KANDY | SPA, THERMAL POOL



JETWING KADURUKETHA



KALUNDEWA RETREAT



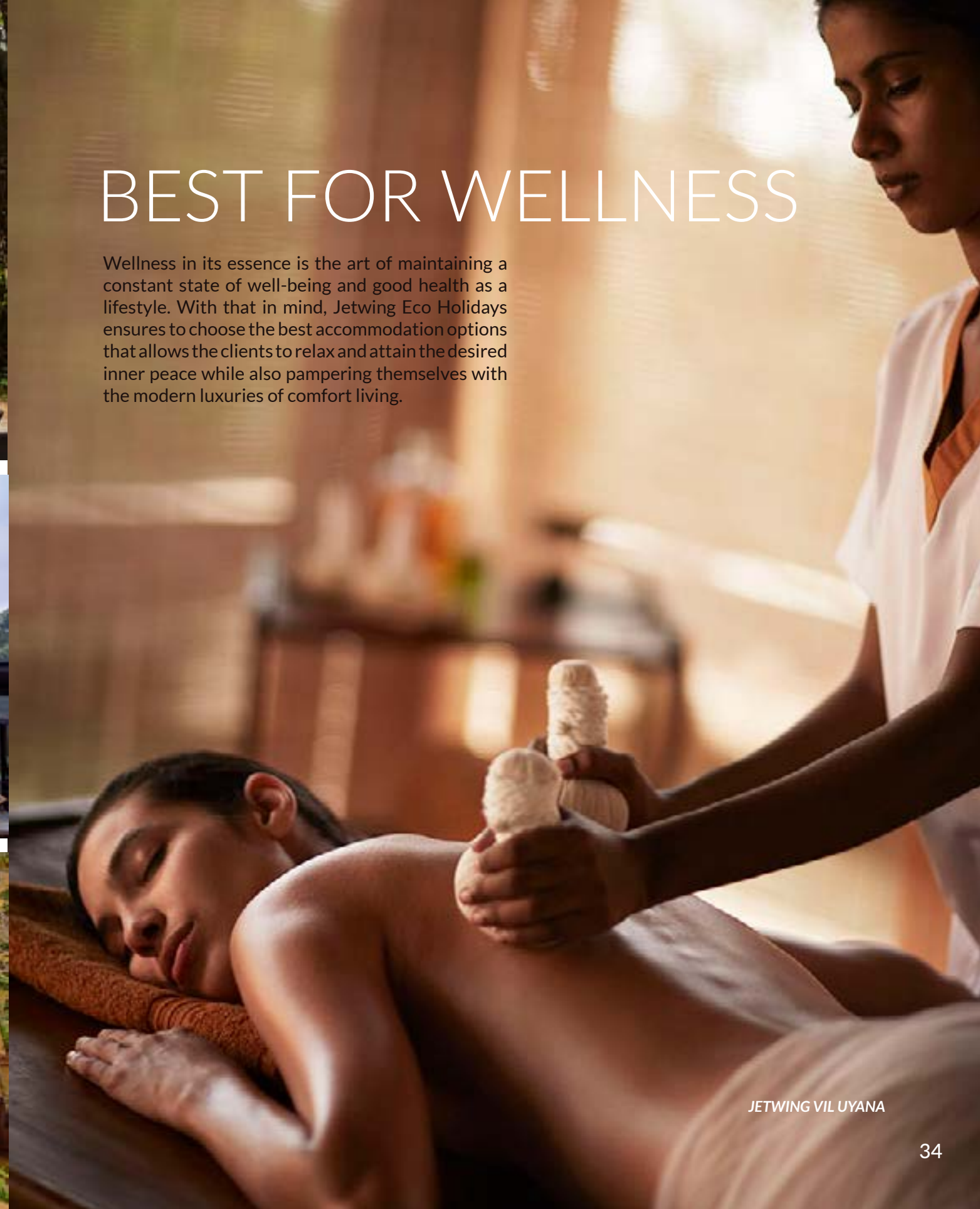
SANTANI WELLNESS RESORT & SPA



JETWING AYURVEDA PAVILIONS

BEST FOR WELLNESS

Wellness in its essence is the art of maintaining a constant state of well-being and good health as a lifestyle. With that in mind, Jetwing Eco Holidays ensures to choose the best accommodation options that allows the clients to relax and attain the desired inner peace while also pampering themselves with the modern luxuries of comfort living.



JETWING VIL UYANA

MEDIA TOURS

Handling Film Crews and Media Groups requires a suite of specialist skills. An understanding of the special needs of Film Crews and Media Groups and the logistic is one. Creativity and imagination to suggest suitable story boards for a Film Crew and Media Group remit is another. Resourcefulness and a fair dollop of patience and energy to secure the necessary permissions and official permits is another essential skill. Jetwing Eco Holidays has probably handled more professional Film Crews and Media Groups than any other specialist tour operator in Sri Lanka, with expert skills, knowledge and exposure by handling many world-renowned Film Crews and Media Groups who have visited Sri Lanka with Jetwing Eco Holidays.



EXPERTISE OF
JETWING ECO HOLIDAYS
IN HANDLING MEDIA
& FILM CREWS



Michaela's Wildlife
Challenge
Wildlife Researcher

For Michaela's Wild Challenge, Jetwing Eco Holidays arranged seven assignments for Michaela to go in search of rare animals. With one of the Jetwing Research Initiative sponsored Leopard Researchers, Michaela finally caught up with the Prince of Darkness, in the light of day.



Lyndal's Lifeline
Wildlife Researcher

For Lyndal's lifeline, Lyndal arrived with a crew from Oxford Scientific Films. Jetwing Eco Holidays handled the arrangements to film the release of orphan Elephants back into the wild.



Deadly 60
BBC Children's Wildlife Series

BBC's Deadly 60 is a popular television series for children on wildlife that is aired internationally through both the BBC and the Discovery Network. The series was able to feature exciting and diverse wildlife in Sri Lanka. In just two weeks, charismatic presenter Steve Backshall and his team were able to work with Jetwing Eco Holidays and obtain footage that included Sea Snakes, Russell's Viper and Indian Python in North-West, Asian Elephant in Udawalawe, Leopard at Yala National Park and finally some remarkable footage of Blue Whales off Mirissa in Southern Sri Lanka.



Telesgop Television
Welsh Television Channel

They wanted to do a story on the Asian Elephant, with wild footage complimented by captive Elephants. Jetwing Eco Holidays arranged a mini pageant to bring to life the historical and cultural association between Elephants and man. The crew was able to film the entire sequence from the preceding religious ceremonies to the end.



Bill Oddie
Wildlife Personality

Bill Oddie is one of Britain's most well-known wildlife personalities. Bill's programs aired on BBC TV include "Birding With Bill Oddie", "Bill Oddie Goes Wild", the much-acclaimed and successful "Springwatch" and "Autumnwatch". Bill Oddie along with Liam Creedon (Travel Writer from the Press Association in the UK) visited Sri Lanka which was hosted by the SLTPB. This was initiated by SLTPB's UK PR Company Representation Plus, organized and run by Jetwing Eco Holidays for his wildlife programs in 2010.



James Fair
BBC Wildlife Magazine

James was in Sri Lanka to do a special supplement (24 pages) featuring Sri Lanka in BBC Wildlife Magazine. James visited Yala, Minneriya & Wilpattu National Park for Big Game, Horton Plains National Park, Sinharaja & Kanneliya Rainforests for birding & Sigiriya and Polonnaruwa for history and culture.



Marianne Taylor
Birdwatch Magazine

Jetwing Eco Holidays hosted Marianne Taylor, Sub-editor of Birdwatch Magazine, for a seven day birding tour. She visited some of the best birding sights in Sri Lanka including Sinharaja Rainforest, Nuwara Eliya & Kitulgala.



Anna Nekaris
Primatologist

Anna is a Course Leader in Primate Conservation (M.Sc) and a Professor in Biological Anthropology at Oxford Brookes University, School of Social Sciences and Law, Department of Anthropology, Nocturnal Primate Research Group in the UK. Jetwing Eco Holidays assisted her students to make optimum use of their time in Sri Lanka.

OTHER TOURS



CULTURE & HERITAGE

Sri Lanka is a country which offers rich experiences and landscapes of culture and heritage and Jetwing Eco Holidays bring out the best of these to its clients. While the Cultural Triangle of Sri Lanka offers the best of culture and heritage value including Anuradhapura, Polonnaruwa, Sigiriya and Dambulla, there are many other sites such as Kandy and Galle that are also rich in Sri Lankan culture and heritage.



ADVENTURE

Sri Lanka is a destination with much to offer from sun soaked beaches to mist clad mountains that offers adrenaline rushing experiences for the adventure lovers. Ranging from adventurous treks to white water rafting to cycling tours, Sri Lanka offers some of the best adventurous experiences.



LOCAL DELIGHTS

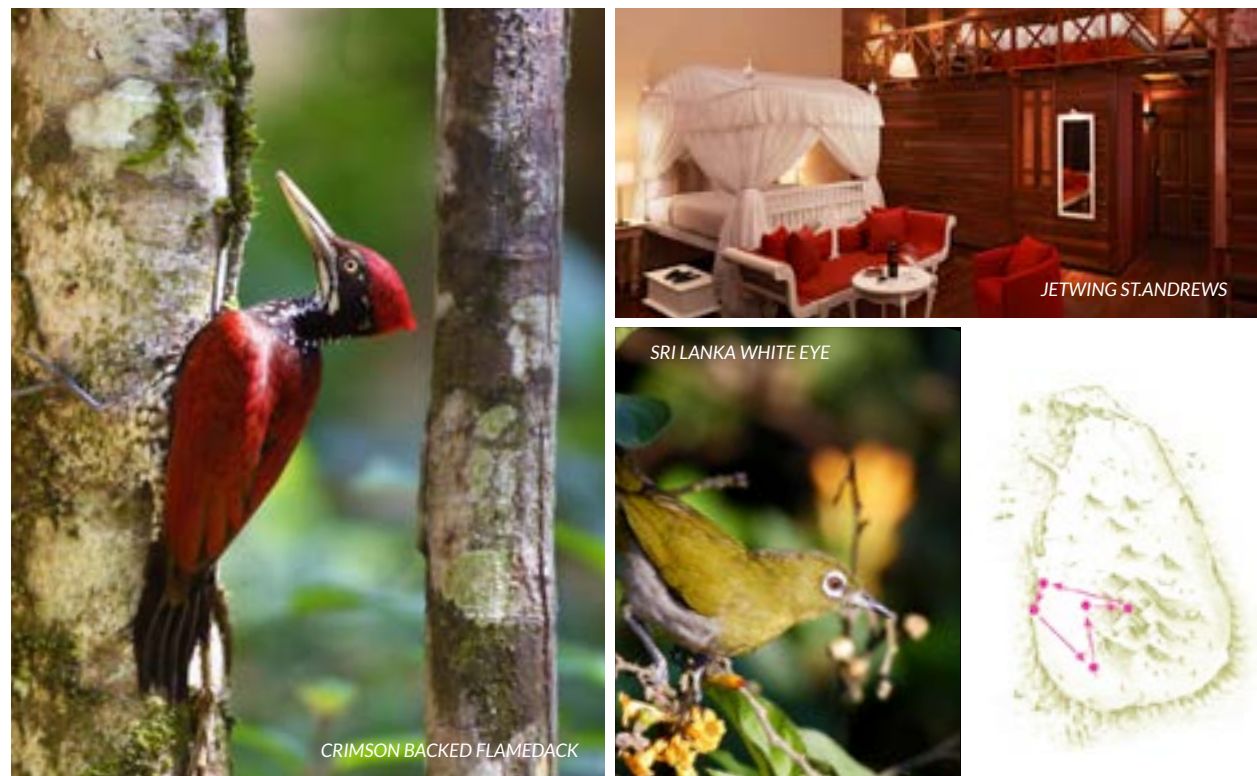
Sri Lanka offers perfect combinations of herbs, spices and flavors that dash your taste buds with excitement and fulfillment. The local delights are the perfect treasures to enthrall you in a culinary serendipity.



TEA & HILL COUNTRY

Defined by the scenic beauty, misty hills, soothing weather and lush green tea estates, the hill country of Sri Lanka is home to world renowned tea estates that provide some of the best tea variants in the world and also home to beautiful mountains, scenic hills and valleys and a breathtaking train journey identified as one of the most scenic train rides in the world by many international bloggers.

EXPERIENCE ENDEMIC BIRDS OF SRI LANKA



DAY 1 Arrive in Sri Lanka and transfer to **Villa Talangama, Colombo** for one night. Afternoon walk along **Talangama Lake** for Black and Yellow Bitterns, Watercock & other common sub-continental species.

DAY 2 After breakfast, leave for **Blue Magpie Lodge, Sinharaja** for three nights. En route visit **Bodhinagala Forest Reserve** to look for Sri Lanka **Grey Hornbill**, **Yellow-fronted Barbet**, **Sri Lanka Hanging Parrot** and if lucky the scarce endemic **Green-Billed Coucal**.

DAY 3-4 Full day visit to **Sinharaja Rainforest (A UNESCO World Heritage Site)** for lowland endemics and mixed species bird flocks.

DAY 5 After breakfast, leave for **Royal River Resort, Kithulgala** for two nights.

DAY 6 Afternoon, cross the Kelani River in a dugout canoe and reach the **Kelani Valley Forest Reserve** to look

for **Sri Lanka Myna, Green-billed Coucal, Spot-Winged Thrush, Sri Lanka Blue Magpie, Sri Lanka Spurfowl, Brown-Capped Babbler** and **Red-faced Malkoha**.

DAY 7 After breakfast, leave for **Jetwing St. Andrews Hotel, Nuwara Eliya** for two nights. Afternoon, visit Victoria Park. Highlights include **Yellow-Eared Bulbul, Sri Lanka Hill White-eye** and **Dull-Blue Flycatcher**.

DAY 8 Pre-dawn start for **Horton Plains National Park** for the endangered **Sri Lanka Whistling Thrush**. Other highlights include **Sri Lanka Bush Warbler** and **Sri Lanka Wood Pigeon**.

DAY 9 After breakfast, leave for **Jetwing Blue, Negombo** for one night.

DAY 10 Transfer to International Airport for departure.

EXPERIENCE THE BIG FIVE OF SRI LANKA



DAY 1 Meet on arrival and transfer to **Bar Reef Resort, Kalpitiya** for two nights.

DAY 2 Early morning, take the boat from the hotel and head out to sea, beyond the reef in search of **Sperm Whale** – the largest Toothed Whale in the world.

DAY 3 After breakfast, leave for **Palm Garden Village, Anuradhapura** for two nights.

DAY 4 Morning & Afternoon Game Drive to **Wilpattu National Park** in search of **Sloth Bear** and **Leopard**.

DAY 5 After breakfast, leave for **Cinnamon Citadel, Kandy** for one night. Late afternoon visit the sacred **Kandy Temple of the Tooth Relic**.

DAY 6 After breakfast, leave for **Kalu's Hideaway, Udawalawe** for one night. Afternoon Game-Drive to **Udawalawe National Park** where sightings of **Asian**

Elephants are virtually guaranteed.

DAY 07 After breakfast, leave for **Jetwing Yala, Yala** for three nights. Afternoon Game-Drive to **Yala National Park** in search of **Leopard, Sloth Bear** and **Asian Elephant**. The biggest draws in **Yala** are **Leopards, Elephants** and **Sloth Bears**.

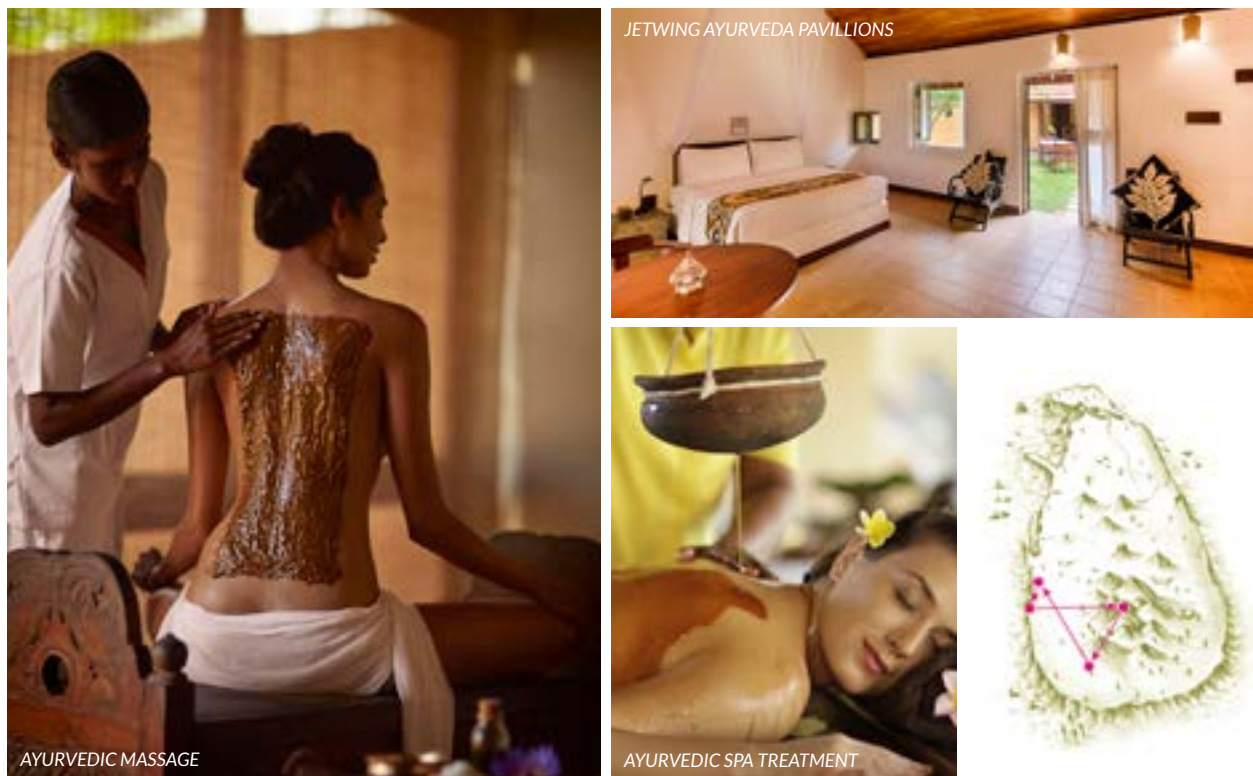
DAY 8-9 Morning and afternoon safaris at **Yala National Park** in search of **Leopard, Sloth Bear** and **Asian Elephant**.

DAY 10 After breakfast, leave for **Jetwing Lighthouse Hotel and Spa, Galle** for three nights. Evening, visit the **Galle Dutch Fort (a UNESCO World Heritage Site)**.

DAY 11-12 Morning, drive to **Mirissa Fisheries Harbour** and get on the boat in search of the **Blue Whale (largest animal in the world)** and **Dolphins**.

DAY 13 Transfer to International Airport for departure.

EXPERIENCE A LUXURY WELLNESS TOUR



DAY 1 Arrive in Sri Lanka and transfer to **Jetwing Ayurveda Pavillions, Negombo** for two nights. Spend the day at leisure.

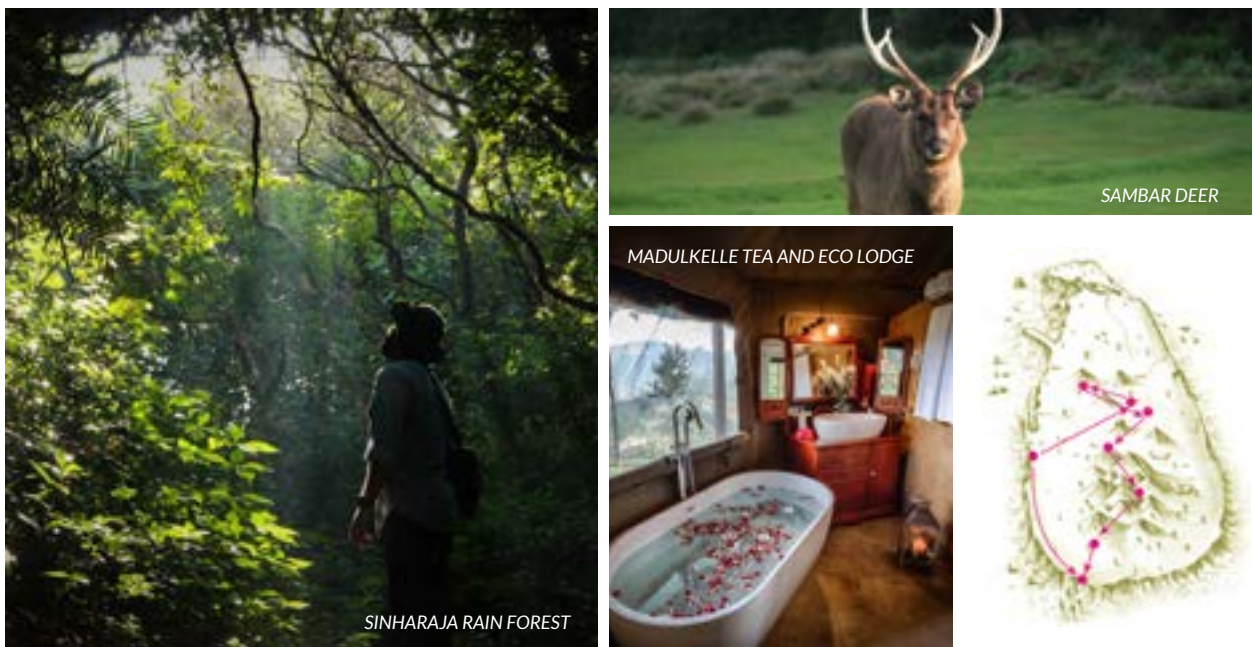
DAY 2 Spend the day at the hotel in leisure and meet with the Wellness and Ayurvedic specialists to get guidance and enlighten. Begin experiencing Ayurvedic treatments (You are free to choose suitable Ayurvedic spa treatments available at the hotel or pick with the assistance of the specialists). Have a relaxing time at **Jetwing Ayurveda Pavillions**.

DAY 3 After a refreshing breakfast leave for **Santani Wellness Resort & Spa, Kandy** for four nights. En route visit the Temple of the Tooth Relic where you can experience tranquil and serene mind relaxing religious rituals. Attain peace of mind while resting at **Santani Wellness Resort & Spa**.

DAY 4-6 Indulge on a Wellness tour with the most effective treatments among the rich heritage of Ayurveda in Sri Lanka where you can sustain greater mental, spiritual and physical well-being for years to come at **Santani Wellness Resort & Spa, Kandy**.

DAY 7 Transfer to International airport for departure.

EXPERIENCE A WALKING & HIKING HOLIDAY IN SRI LANKA



DAY 1 Meet on arrival and transfer to **Jetwing Blue, Negombo** for one night.

DAY 2 After breakfast, leave for **Jetwing Lake, Dambulla** for three nights. Afternoon, safari at **Minneriya National Park**.

DAY 3 Transfer to **Anuradhapura**. Spend the day walking amongst history and ruins with a local guide. Spend the day and return after lunch.

DAY 4 Head to **Polonnaruwa**. Spend the morning exploring the ruins led by a local site guide. After lunch visit the Smithsonian Primate Center for a Monkey tour led by a local Primatologist which elaborates about the various Monkey species in **Polonnaruwa**.

DAY 5 After breakfast, leave for **Madulkelle Tea and Eco Lodge, Kandy** for two nights. Afternoon, take a short walk to a nearby escarpment. The walk is through the tea estates and local villages.

DAY 6 Trek through tea estates into tropical mountain forests to reach the **Campbell Waterfalls**. Trek is 4 hours long.

DAY 7 After breakfast, leave for **Jetwing St.Andrew's Hotel, Nuwara Eliya** for two nights. Post lunch set out for a short walk to the secret **Bomburuella Waterfalls**.

DAY 8 Drive to the park and then hike to **World's End** a precipice with a drop of 1200m! A scenic day with a relaxed walk. **Sambar Deer** and **Eagles** can be seen.

DAY 9 After breakfast, leave for **Rainforest Edge, Sinharaja** for two nights. **Sinharaja** is bio-diversity hotspot, with 31 of the 34 endemic Birds found here in Sri Lanka.

DAY 10 Enjoy a beautiful day of nature walking. Walk through the Rainforest led by a local naturalist.

DAY 11 After breakfast, leave for **Galle Heritage Villa, Galle** for one night. After lunch, take a walking tour of the **Colonial Fort**.

DAY 12 Transfer to International Airport for departure.



KAMAL NAWFER

OUR TEAM

Our team is passionate about Sri Lanka and its wildlife. They include some of the most competent and enthusiastic wildlife guides in the country. Travel with them for a memorable and an insightful holiday.



TRAVEL DESIGNERS



NATURALISTS



FIELD GUIDES



ISHANDA SENEVIRATHNA



CHAMINDA JAYASEKARA



ANOMA ALAGIYAWADU

JETWING FLEET

With your comfort and convenience being our foremost concern, we offer a fleet of round the clock services through our transport division, to chauffeur you in complete safety and luxury anywhere in Sri Lanka.

Select from a wide range of vehicles; be it luxury coaches, mini coaches, SUV's or cars, outfitted with all the necessary amenities that best meet your travel requirements. The capable and professionally trained multi-lingual chauffeurs, not only get you to your destination in comfort, but also go above and beyond to add value to your experience in Sri Lanka by their ability to act as knowledgeable local guides. Air transfers to all parts of the island can also be easily arranged.



TravLanka

YOUR GUIDE IN SRI LANKA

Sri Lanka Travel Guide & Holiday Planner With Key Attractions, Places To Dine And Accommodation



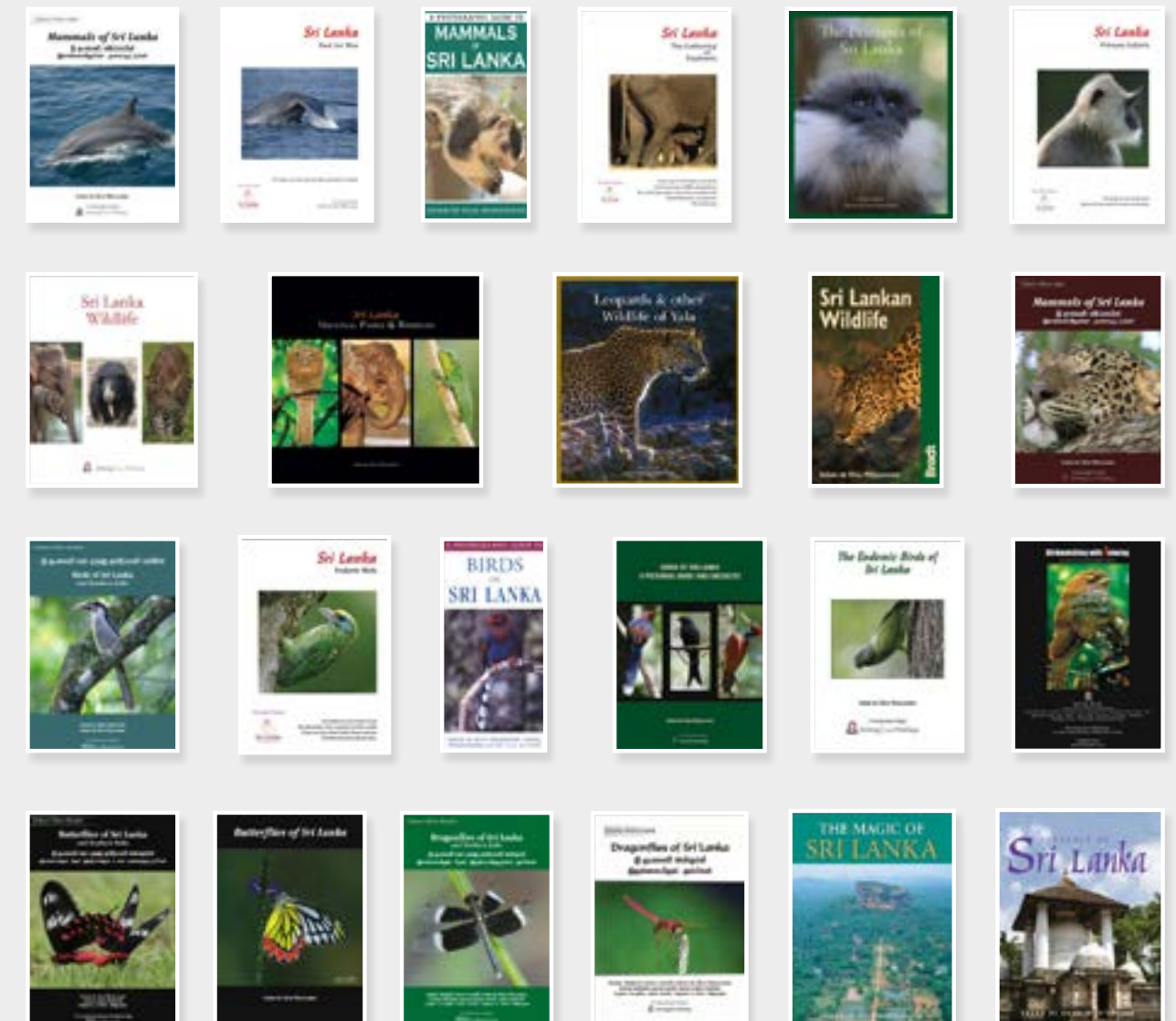
DOWNLOAD IT TODAY!




OUR PUBLICATIONS

Jetwing Eco Holidays is not only focused in making the perfect tour arrangements for you, but also focuses on providing the best experience while you are on tour. We have released many publications that provide both informative and interesting information for you to have the best of wildlife and wellness encounters in Sri Lanka. Past and present staff have also authored publications for local and international publishers. Some of these are listed below, together with our in house publications.

View more at : www.jetwingeco.com



TRAVELLING WITH US



SUSTAINABILITY & ENVIRONMENTAL CONSERVATION

Family owned and in the tourism industry for the past 41 years, the name 'Jetwing' has long been associated with a commitment to hospitality as well as the environment. The essence of the brand is to deliver authentic Sri Lankan hospitality.

We at Jetwing believe that tourism cannot exist in isolation and only works well when a complex and intimate relationship with the local community strikes a harmonious balance. The Jetwing Eternal Earth Programme (JEEP) is the umbrella term used for all community and nature-based projects as well as sustainability initiatives undertaken as a responsible tourism initiative by Jetwing.

JEEP is split into the following four sections – Community Outreach Initiatives, Sustainability, Eco Projects and Humanitarian Programmes.

SUSTAINABILITY POLICY

Jetwing takes all possible steps to protect and maintain a clean and healthy environment by committing to conserving our natural resources by minimizing our negative impacts, protecting and enhancing all ecosystems, conserving energy and water, minimising pollution, reducing, reusing and recycling waste and continual improvement by means of minimising environmental pollution and destruction aspects.

ENJOY A RISK FREE TRAVEL EXPERIENCE WITH JETWING ECO HOLIDAYS



All Jetwing Eco Holidays customers are covered fully with a comprehensive insurance policy while in Sri Lanka. Travel with us securely in the knowledge that you are protected while in our care. This is in partnership with Fairfirst Insurance.

#JETWINGECOHOOLIDAYS

“ We would just like to thank you for organizing such a brilliant nature tour of Sri Lanka for us. We have loved every moment of our tour and made the most of every moment. We have been fortunate in seeing so much wildlife and variety of scenery. Thank you for being so patient with our queries and your quick responses. It makes all the difference – your speedy reply convinced us to book with you straight away ”

- Alison and Sue



Fiona Clark reviewed Jetwing Eco Holidays – 5★
28 October 2017 · 🌐

We recently had a superb wildlife watching holiday to Yala, organized by Jetwing Eco Holidays. Block 1 of the park was closed, so we had to travel a little further afield for our wildlife safaris, but we very much enjoyed the fact that everything was quieter. Our trip could not have been better: hotels, guides, transport, and so many birds! Many mammals too, including elephants and a leopard. Thank you Jetwing!



“ We are now back home after a truly memorable holiday. I would like to thank you sincerely for your fantastic organization. Everyone had a great time – even my mother-in-law who has never left the country loved it so thank you very much indeed – I will be recommending your services to all my friends ”

- Anjana



www.jetwingeco.com





Jetwing ECO HOLIDAYS
SRI LANKA

📍 Jetwing House II,
8th Floor,
46/26, Navam Mawatha,
Colombo 02, 00200,
Sri Lanka

☎ +94 11 234 5700
+94 11 238 1201

📱 +94 770 377 695

🖨 +94 11 234 5725

✉ enquiries@jetwingeco.com

🌐 www.jetwingeco.com

💬 Whatsapp/Viber
+94 77 264 6513

💬 Messenger
@Jetwingeco